



Free Standing Interception Air Rods





Free standing interception air rods – maximum protection, minimum effort

The new Furse interception air rods are designed to provide a fast and easy solution to protecting rooftop installations, like air conditioning units or solar panels, from a direct lightning strike, all in accordance with IEC/BS EN 62305:2006.

Offering a choice of copper, aluminium or stainless steel with aluminium tip, these free standing interception air rods use concrete blocks to secure them to the roof surface, minimising the time and effort needed by the installer.

Rod height and wind loading are the important factors when choosing an appropriate interception air rod. Wind loading becomes more relevant for taller interception air rods (3 m and above), where selection is by wind zone.

This publication provides all the key information and guidance necessary to assist with selection of the right free standing interception air rod for the task – ensuring maximum protection against lightning, with minimum effort.

[For product introduction](#)

[For product selection](#)

[For individual component listing](#)

[see page 3](#)

[see pages 4 & 5](#)

[see pages 6 & 7](#)

Interception tip

Interception pole

Base frame

Concrete base

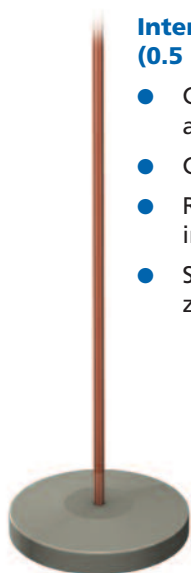
Furse free standing interception air rods are easily constructed from a small range of components including interception pole, support frame and concrete bases to provide a highly versatile and effective lightning protection solution.

The straightforward design of this multi-component system enables rapid installation of interception air rods to protect rooftop and exposed equipment from lightning damage.

Features & benefits

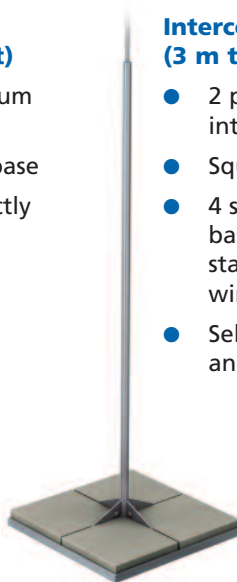
- Protects rooftop mounted equipment from direct lightning strikes
- Complies with IEC/BS EN 62305 standard
- Lightweight construction
- Corrosion resistant
- Quick and easy to assemble
- Available in a range of heights from 0.5 m to 10 m
- Range of frames and concrete weights for different wind zones
- Large protection zones
- Modular, versatile and robust

Product options



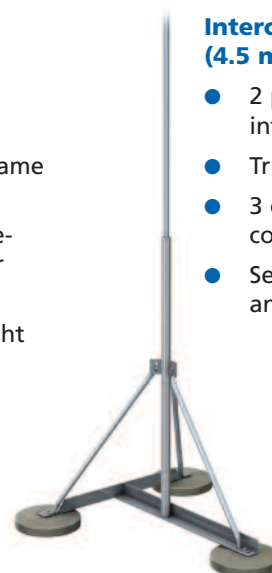
Interception air rod (0.5 m to 2 m height)

- Copper or aluminium air rod
- Circular concrete base
- Rod connects directly into base
- Suitable for wind zones 1 – 4



Interception air rod (3 m to 4 m height)

- 2 piece interception pole
- Square support frame
- 4 square concrete bases (or 8 double-stacked for higher wind speeds)
- Select by rod height and wind zone



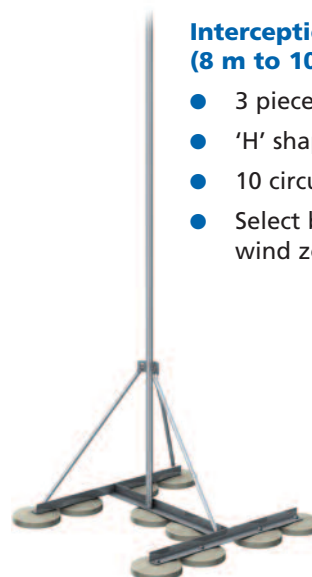
Interception air rod (4.5 m to 5.5 m height)

- 2 piece interception pole
- Tripod support frame
- 3 circular concrete bases
- Select by rod height and wind zone



Interception air rod (6 m to 8 m height)

- 3 piece interception pole
- Tripod support frame
- 6 circular concrete bases
- Select by rod height and wind zone



Interception air rod (8 m to 10 m height)

- 3 piece interception pole
- 'H' shaped support frame
- 10 circular concrete bases
- Select by rod height and wind zone

Product selection

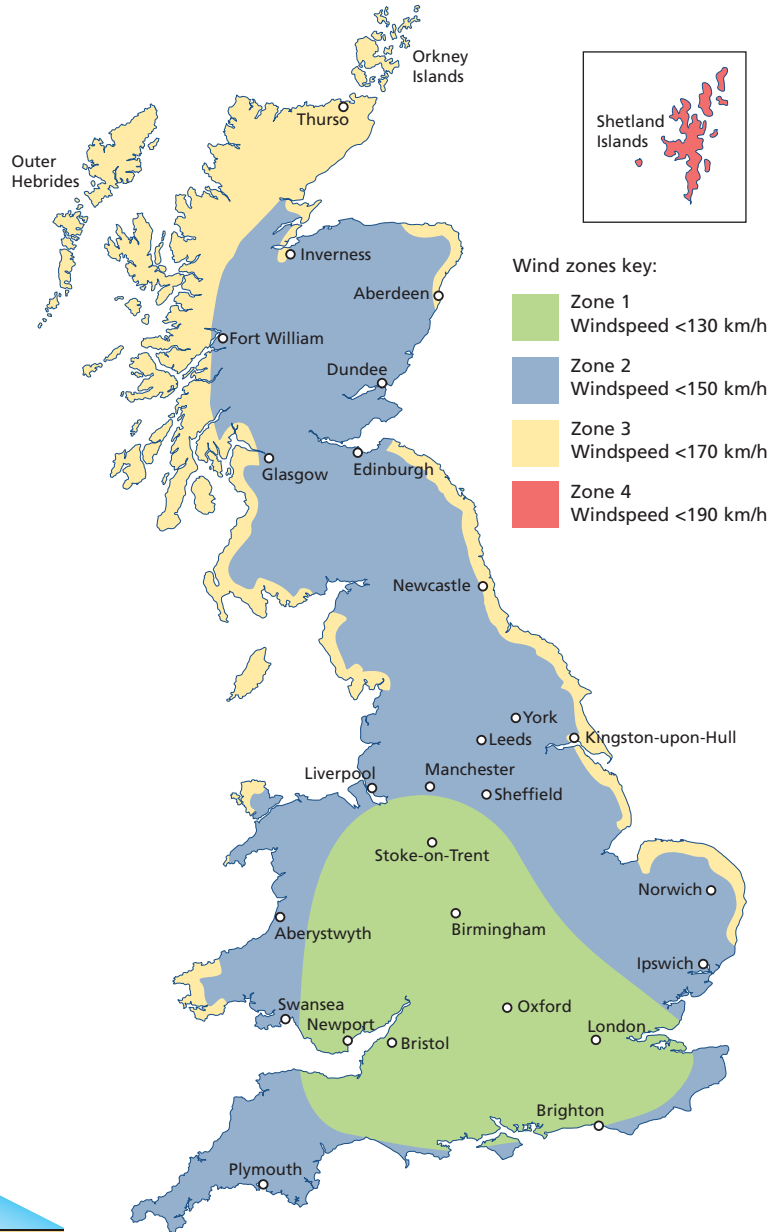
Determining the correct interception air rod for a particular installation is straightforward.

Firstly, establish the interception air rod height required to create a protective zone around the equipment.

The diagram and table below give guidance on minimum interception air rod heights to protect equipment, for the respective Classes of Lightning Protection Systems (LPS), as defined within IEC/BS EN 62305:2006. This is relevant for all interception air rods from 0.5 m upwards.

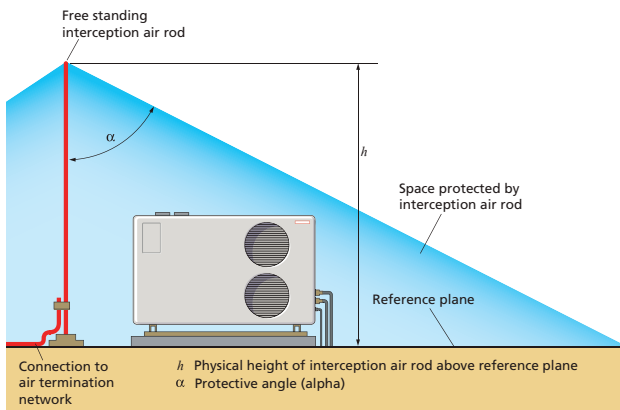
Secondly, consider the wind loading at the installation. Wind loading becomes an important factor for taller interception air rods, since extreme weather can subject them to fatigue mechanisms.

The map featured right establishes four wind zones for the UK, as highlighted by the wind zones key.



Protective angle diagram

The interception air rod must have sufficient height to provide a clear zone of protection around the equipment to be protected, as illustrated below.



For non UK wind zone information, please contact your local Furse representative.

Protective angle to protection radius comparison table:

Use this table to calculate the minimum air rod height required to protect equipment.

Height of interception air rod above reference plane (m)	LPS Class IV		LPS Class III		LPS Class II		LPS Class I	
	Angle (deg)	Radius (m)	Angle (deg)	Radius (m)	Angle (deg)	Radius (m)	Angle (deg)	Radius (m)
0.5	78.7	2.5	76.3	2.0	73.2	1.7	70.0	1.4
1	78.7	5.0	76.3	4.1	73.2	3.3	70.0	2.7
1.5	78.7	7.5	76.3	6.1	73.2	5.0	70.0	4.1
2	78.7	10.0	76.3	8.2	73.2	6.6	70.0	5.5
3	76.7	12.7	74.1	10.5	70.1	8.3	66.3	6.8
4	74.7	14.6	72.0	12.3	67.1	9.5	62.6	7.7
5	72.8	16.1	69.9	13.6	64.4	10.4	59.1	8.4
6	71.0	17.4	67.9	14.8	62.0	11.3	55.9	8.9
7	69.3	18.5	66.0	15.7	59.7	12.0	53.0	9.3
8	67.7	19.5	64.3	16.6	57.6	12.6	50.2	9.6
9	66.2	20.4	62.6	17.4	55.6	13.2	47.7	9.9
10	64.7	21.2	61.1	18.1	53.8	13.6	45.2	10.1

Free standing interception air rods from 0.5 – 2 m

These interception air rods comprise an air rod connecting directly into a circular concrete base. This air rod type is available up to 2 m in height and is non wind zone specific.

For this interception air rod type, both the air rod and concrete base must be ordered from the component table shown on page 6.



Free standing interception air rods from 3 – 10 m

These interception air rods comprise multiple components including interception pole, supporting base frame plus concrete bases. All components need to be ordered to ensure a fully supported installation.

For this interception air rod type, both the minimum interception pole height and the appropriate wind zone need to be established. Once determined, the exact components can be selected from the relevant wind zone table below.

For example, a 5 m interception air rod at a Zone 2 location would require the following components (as cross-referenced to the Zone 2 table below):

Interception pole:
912004-FU

Base frame:
499005-FU

Concrete bases:
103110-FU x 3

Individual component details are provided on pages 6 & 7.



Zone 1 – Wind speeds of <130 km/h

Height of interception pole	Interception pole Part No.	Base frame Part No.	Concrete base Part No.
3 m	912000-FU	499000-FU	4 x 499100-FU
3.5 m	912001-FU	499000-FU	4 x 499100-FU
4 m	912002-FU	499000-FU	4 x 499100-FU
4.5 m	912003-FU	499005-FU	3 x 103101-FU
5 m	912004-FU	499005-FU	3 x 103101-FU
5.5 m	912005-FU	499005-FU	3 x 103110-FU
6 m	912006-FU	499006-FU	6 x 103103-FU
6.5 m	912007-FU	499006-FU	6 x 103103-FU
7 m	912008-FU	499006-FU	6 x 103103-FU
7.5 m	912009-FU	499006-FU	6 x 103101-FU
8 m	912010-FU	499006-FU	6 x 103110-FU
9 m	912011-FU	499007-FU	10 x 103118-FU
10 m	912013-FU	499007-FU	10 x 103118-FU

Zone 2 – Wind speeds of <150 km/h

Height of interception pole	Interception pole Part No.	Base frame Part No.	Concrete base Part No.
3 m	912000-FU	499000-FU	4 x 499100-FU
3.5 m	912001-FU	499000-FU	4 x 499100-FU
4 m	912002-FU	499000-FU	4 x 499101-FU
4.5 m	912003-FU	499005-FU	3 x 103110-FU
5 m	912004-FU	499005-FU	3 x 103110-FU
5.5 m	912005-FU	499005-FU	3 x 103118-FU
6 m	912006-FU	499006-FU	6 x 103103-FU
6.5 m	912007-FU	499006-FU	6 x 103103-FU
7 m	912008-FU	499006-FU	6 x 103101-FU
7.5 m	912009-FU	499006-FU	6 x 103110-FU
8 m	912010-FU	499006-FU	6 x 103118-FU
9 m	912011-FU	499007-FU	10 x 103118-FU
10 m	912013-FU	499007-FU	10 x 103118-FU

Zone 3 – Wind speeds of <170 km/h

Height of interception pole	Interception pole Part No.	Base frame Part No.	Concrete base Part No.
3 m	912000-FU	499000-FU	4 x 499100-FU
3.5 m	912001-FU	499000-FU	4 x 499101-FU
4 m	912002-FU	499000-FU	8 x 499100-FU
4.5 m	912003-FU	499005-FU	3 x 103118-FU
5 m	912004-FU	499005-FU	3 x 103118-FU
5.5 m	912005-FU	499006-FU	6 x 103103-FU
6 m	912006-FU	499006-FU	6 x 103103-FU
6.5 m	912007-FU	499006-FU	6 x 103101-FU
7 m	912008-FU	499006-FU	6 x 103110-FU
7.5 m	912009-FU	499006-FU	6 x 103118-FU
8 m	912010-FU	499007-FU	10 x 103118-FU
9 m	912011-FU	499007-FU	10 x 103118-FU
10 m	912013-FU	On request	On request

Zone 4 – Wind speeds of <190 km/h

Height of interception pole	Interception pole Part No.	Base frame Part No.	Concrete base Part No.
3 m	912000-FU	499000-FU	4 x 499100-FU
3.5 m	912001-FU	499000-FU	4 x 499101-FU
4 m	912002-FU	499000-FU	8 x 499101-FU
4.5 m	912003-FU	499006-FU	3 x 103103-FU
5 m	912004-FU	499006-FU	3 x 103103-FU
5.5 m	912005-FU	499006-FU	3 x 103103-FU
6 m	912006-FU	499006-FU	6 x 103101-FU
6.5 m	912007-FU	499006-FU	6 x 103118-FU
7 m	912008-FU	On request	On request
7.5 m	912009-FU	On request	On request
8 m	912010-FU	On request	On request
9 m	912011-FU	On request	On request
10 m	912013-FU	On request	On request



Interception air rod (0.5 m to 2 m)

Rod height	Rod diameter	Thread	Material	Weight each	Rod Part No.	Base Part No.
0.5 m	15 mm	M16	Copper	0.73 kg	RA215	103101-FU
1 m	15 mm	M16	Copper	1.51 kg	RA225	103101-FU
1.5 m	15 mm	M16	Copper	2.35 kg	RA230	103110-FU
2 m	15 mm	M16	Copper	3.00 kg	RA240	103110-FU
0.5 m	15 mm	M16	Aluminium	0.29 kg	RA015	103101-FU
1 m	15 mm	M16	Aluminium	0.53 kg	RA025	103101-FU
1.5 m	15 mm	M16	Aluminium	0.80 kg	RA030	103110-FU
2 m	15 mm	M16	Aluminium	1.06 kg	RA040	103110-FU

For construction of interception air rods up to 2 m height, where interception air rod connects directly into base via M16 insert. Interception air rod manufactured from high conductivity hard drawn copper or aluminium, with rolled threads. Supplied complete with locknut. Concrete base.

“Field Trials in the United States, carried out over many years research have confirmed that blunt air rods are struck by lightning in preference to taper pointed air rods.”

“Lightning rod improvement studies” by C B Moore, W Rison, J Mathis, G Aulich. Journal of Applied Meteorology, May 2000.

Note: during high winds and extreme weather conditions air rods over 1 m height can be subjected to fatigue mechanisms. It is therefore recommended that additional supports are considered before installation.

Free standing interception pole (3 m to 10 m)

Pole height	Pole diameter	Pole make up	Weight each	Part No.
3 m	10 - 42 mm	2 piece (1.5 m + 1.5 m)	5.0 kg	912000-FU
3.5 m	10 - 42 mm	2 piece (2.0 m + 1.5 m)	5.5 kg	912001-FU
4 m	10 - 42 mm	2 piece (2.0 m + 2.0 m)	7.0 kg	912002-FU
4.5 m	10 - 42 mm	2 piece (3.5 m + 1.0 m)	9.2 kg	912003-FU
5 m	10 - 42 mm	2 piece (3.5 m + 1.5 m)	10.0 kg	912004-FU
5.5 m	10 - 42 mm	2 piece (4.0 m + 1.5 m)	10.6 kg	912005-FU
6 m	10 - 60 mm	3 piece (2.0 m + 2.0 m + 2.0 m)	18.0 kg	912006-FU
6.5 m	10 - 60 mm	3 piece (2.5 m + 2.0 m + 2.0 m)	19.0 kg	912007-FU
7 m	10 - 60 mm	3 piece (3.0 m + 2.0 m + 2.0 m)	23.5 kg	912008-FU
7.5 m	10 - 60 mm	3 piece (3.5 m + 2.0 m + 2.0 m)	26.0 kg	912009-FU
8 m	10 - 60 mm	3 piece (4.0 m + 2.0 m + 2.0 m)	28.7 kg	912010-FU
9 m	10 - 60 mm	3 piece (4.0 m + 3.0 m + 2.0 m)	30.5 kg	912011-FU
10 m	10 - 60 mm	3 piece (4.0 m + 4.0 m + 2.0 m)	35.5 kg	912013-FU

For construction of interception air rods from 3 to 10 m in height comprising interception pole, support frame and concrete bases.

All interception poles are grade 304 stainless steel with aluminium interception tip. Multi-component, stackable system with screw retention.

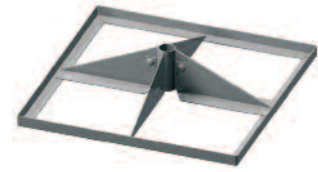
Supplied with 3 terminal lugs for base frame connection.



Square base frame

Dimensions	Material	Weight each	Part No.
650 x 650 mm	Stainless steel	7 kg	499000-FU

Supplied with 4 locking screws to hold 42 mm diameter interception pole



Tripod base frame

Dimensions	Material	Weight each	Part No.
1350 x 1350 mm	Stainless steel	8 kg	499005-FU
1850 x 1850 mm	Stainless steel	24.5 kg	499006-FU

Supplied with 3 locking arms and bolts to hold 42 mm diameter interception pole, 499006-FU to hold 60 mm diameter interception pole



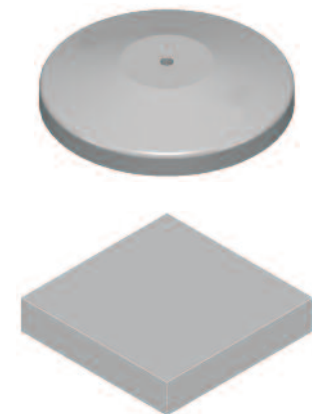
H Shaped base frame

Dimensions	Material	Weight each	Part No.
1850 x 1850 mm	Stainless steel	39.5 kg	499007-FU

Supplied with 3 locking arms and bolts to hold 60 mm diameter interception pole

Concrete base

Description	Weight each	Part No.
Circular concrete base with M16 insert	12 kg	103103-FU
Circular concrete base with M16 insert	16 kg	103101-FU
Circular concrete base with M16 insert	20 kg	103110-FU
Circular concrete base with M16 insert	25 kg	103118-FU
Square concrete base 300 x 300 x 60 mm	12 kg	499100-FU
Square concrete base 300 x 300 x 80 mm	16 kg	499101-FU



Accessories

Description	Weight each	Part No.
Protective polyethylene tray for circular concrete blocks	0.4 kg	103102-FU
Stainless steel clamp for connecting 25 x 3 mm copper tape to 5 – 19 mm thickness steel	0.55 kg	919828-FU

Note: all interception air rods should be installed as part of a comprehensive air termination network.

Furse, first for support

Furse is a world leading designer, manufacturer and supplier of lightning protection systems. Furse offers a wide range of products for lightning protection, including air terminals, conductors and earthing components to protect structures, and surge protection devices to protect electronic equipment.

Furse not only supplies market leading products, but also provides cutting edge design and technical support for lightning protection and earthing systems. For further details on our full range of services, please contact your local Furse office.



UK OFFICE

Thomas & Betts Limited
Furse
Wilford Road
Nottingham
NG2 1EB
United Kingdom

Switchboard +44 (0)115 964 3700
Fax +44 (0)115 986 0538
Sales tel +44 (0)115 964 3800
Sales fax +44 (0)115 986 0071

Email: enquiry@furse.com
www.furse.com

EUROPEAN HEADQUARTERS

Thomas & Betts
200 Chaussée de Waterloo
B-1640 Rhode-St-Genèse
Belgium

Tel +32 (0)2 359 8200
Fax +32 (0)2 359 8201

MIDDLE EAST OFFICE

Thomas & Betts Ltd. Br.
Office 107 5EA East Wing
Dubai Airport Free Zone
PO Box 54567
Dubai
United Arab Emirates

Tel +971 (0)4 609 1635
Fax +971 (0)4 609 1636

furseenquiry@tnb.com

SOUTH EAST ASIA OFFICE

Thomas & Betts Asia (Singapore) Pte Ltd
10 Ang Mo Kio Street 65
#06-07 Techpoint
Singapore 569059

Tel +65 6720 8828
Fax +65 6720 8780

asia.inquiry@tnb.com



Q06054

www.tnb-europe.com

The content of this Thomas & Betts publication has been carefully checked for accuracy at the time of print. However, Thomas & Betts doesn't give any warranty of any kind, express or implied, in this respect and shall not be liable for any loss or damage that may result from any use or as a consequence of any inaccuracies in or any omissions from the information which it may contain. E&OE.

Copyright Thomas & Betts 2009. Copyright in these pages is owned by Thomas & Betts except where otherwise indicated. No part of this publication may be reproduced, copied or transmitted in any form or by any means, without our prior written permission. Images, trade marks, brands, designs and technology are also protected by other intellectual property rights and may not be reproduced or appropriated in any manner without written permission of their respective owners. Thomas & Betts reserves the right to change and improve any product specifications or other mentions in the publication at its own discretion and at any time. These conditions of use are governed by the laws of the Netherlands and the courts of Amsterdam shall have exclusive jurisdiction in any dispute.

Thomas & Betts